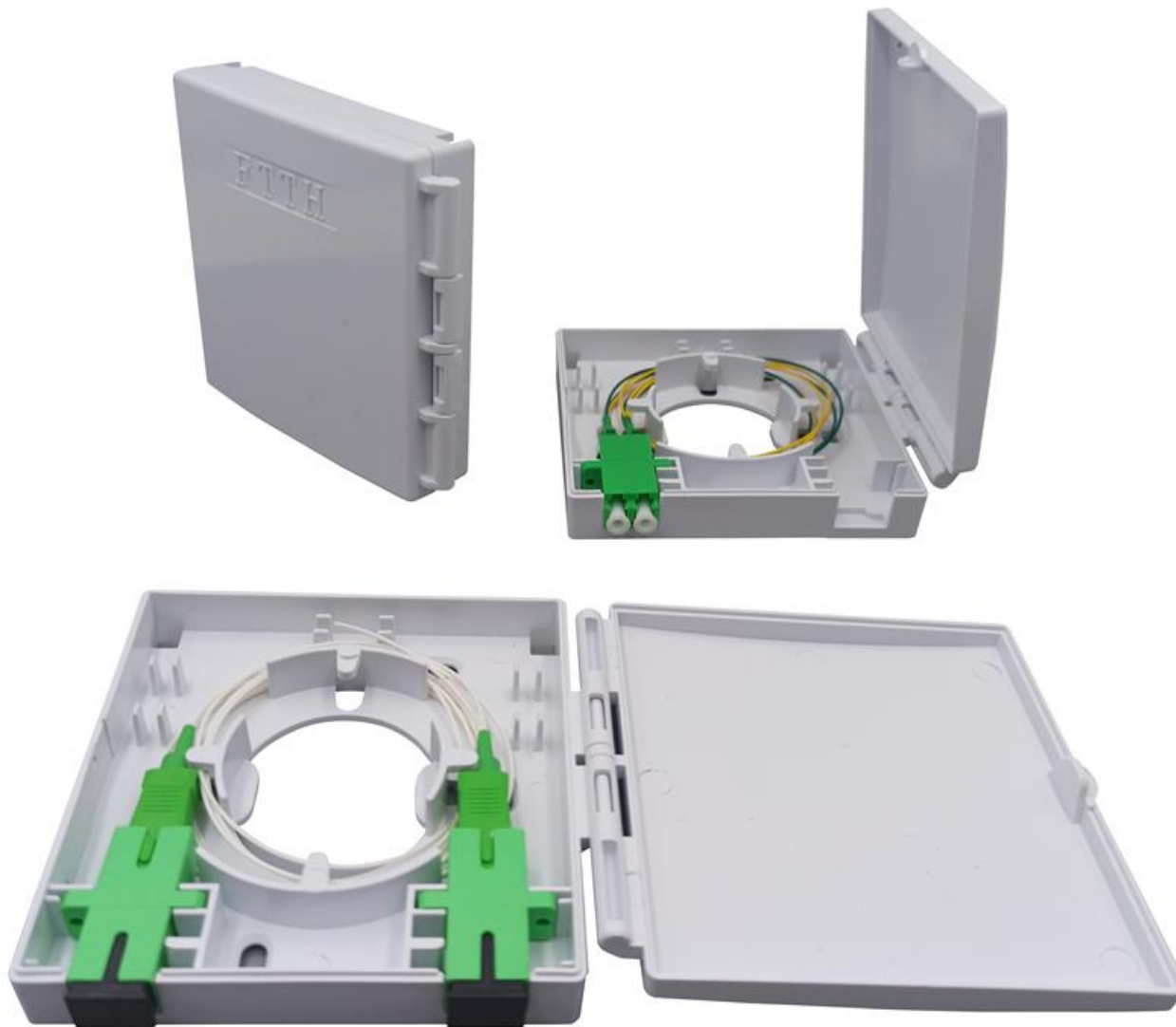


2 Ports SC 4 Ports LC FTTH Fiber Outlet

Electronic Links International, Inc.
Interconnecting Components and Systems

SJ-FTTH-MN-4-2



VP: Michael Bennett: mbennett@electronic-links.com
Engineering: John Dee: johndee@electronic-links.com
Managing Director: Francesco Liburdi: fliburdi@electronic-links.com

Electronic Links
international inc
www.electronic-links.com

2 Ports SC 4 Ports LC FTTH Fiber Outlet

Model: SJ-FTTH-MN-4-2

Max Capacity: 2 Ports SC / 4 Ports LC

Material: ABS + PC

Dimension: 95x87x21mm

FTTH Fiber Outlet Description

FTTH Fiber Outlet employs a compact plug-in design, combines a modern design concept, adopts imported plastic, FTTH Fiber Outlet is of a graceful appearance, and applicable for FTTH, FTTO, and FTTD.

FTTH Fiber Outlet Features

1. Small size, lightweight, use conveniently
2. ABS material, fireproof and dust-proof
3. Radians appearance makes it slinky
4. Suitable for various modules and multimedia interfaces
5. Embedded chart and logo position makes it easy to identity
6. Support MM or SM fiber connection
7. 2 ports for SC simplex, LC duplex adapters

FTTH Fiber Outlet Applications

1. Very thin and matches with other A86 panels in homes and also meet the open or concealed cabling for optical cables
2. Used in FTTH indoor application, home or work area
3. Provide users with optical access or data access
4. May store surplus fiber inside, easy for operation
5. A user end product to realize optical fiber to desktop solution.
6. It can be used in the home or working area to accomplish double-core fiber access and port output.
7. Used in the end termination of residential buildings and villas, to fix and splice with pigtails.

For more details:

 www.electronic-links.com

Contact Us:

VP: Michael Bennett

 mbennett@electronic-links.com

Managing Director: Francesco Liburdi

 fliburdi@electronic-links.com