

Editor's Contact:

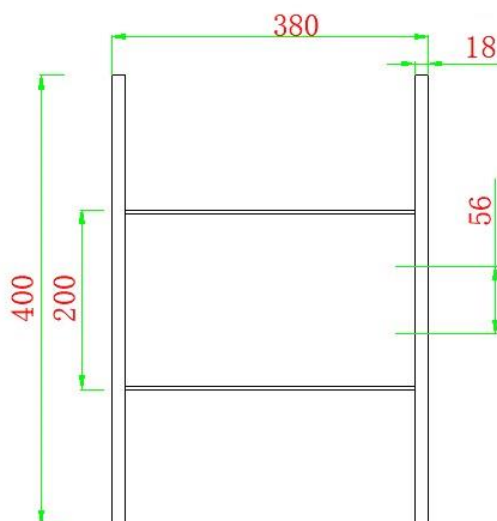
Francesco Liburdi

Tel. USA: +1 607.761.9952

Tel. Italy: + 39.348.6578677

fliburdi@electronic-links.com

Outdoor Flat Drop Cable in the pull box: FTTH/FTTX



Description

Fiber Cable Pull box 2000FT

PN Number: ELII-CPB-2000F

Features

- Cable can be 3.0mm, 5.0mm 4.5*8.1mm 4.5*9.8mm
- Can be connector in the both end(SC APC, Hardened SC APC, MINI SC)
- Max Length: 3000FT

Application

FTTH / FTTX – Indoor & outdoor drops

Single and multi-dwelling units

FTTP and campus networks

Rural broadband

DAS / FTTA

Electronic Links International, Inc. assumes no responsibility for inaccuracies or omissions in the information contained in this document. Specifications are subject to change without notice. Additional information about Electronic Links International, Inc. is available at www.electronic-links.com